

Rashtrasant Janardhan Swami Foundation,s



**RJS**  
RASHTRASANT  
JANARDHAN SWAMI

# College of Pharmacy

📍 : Mumbai - Nagpur Highway, Kokamthan, Tal. Kopargaon,  
Dist. Ahmednagar, Maharashtra – 423 601 ☎ : 9604679000 / 9371479990  
✉ : [rajaswapharmacy@gmail.com](mailto:rajaswapharmacy@gmail.com) / [contact@rjsgi.com](mailto:contact@rjsgi.com)  
[www.rjsgi.com](http://www.rjsgi.com)

Rashtrasant Janardhan Swami Foundation's



**RJS**  
RASHTRASANT  
JANARDHAN SWAMI

# College of Pharmacy



## Knowledge, Diversity & Ethical Practice

Rashtrasant Janardhan Swami Foundation  
For Future Education

# PROSPECTUS



## Rashtrasant Janardhan Swami Foundations, Kopargaon, Dist. Ahmednagar.



We are very happy to welcome you to our institution which has the tradition of the first and brightest students and teachers in the city of Kopargaon. You are also a part of this organization. In the same way, you should have a brief information about this organization.

The Kopargaon is a Taluka in Ahmednagar District. Which is situated on the banks of the holy river Godavari. It is famous for the Samadhi temple of Rashtrasant Shri MOUNGIRI Janardhan Swami Maharaj & 10 km away from Shirdi. The Institute was situated near Mumbai-Nagpur Highway in 25 Acre area with the objective of providing medical & higher education for the poor & needed (Needy) Students in the rural area of kopargaon. The environment of campus is cool, calm and free from air & noise pollution.

## Janardhan Swami Maharaj Mandir, Kopargaon

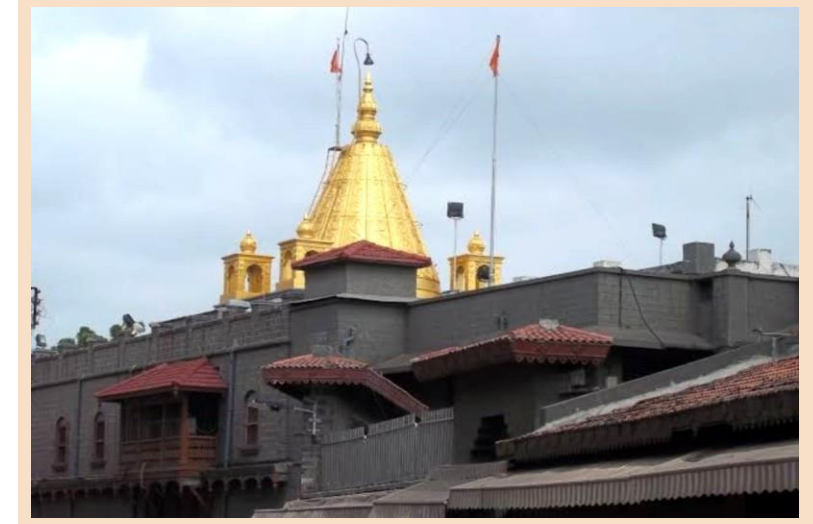
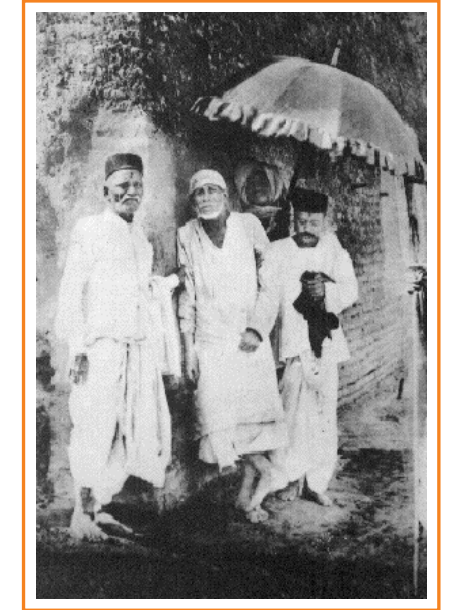
Swamiji was an ardent devotee of Lord Hanuman and Lord Shiva since his childhood days. Therefore, he undertook severe fasts for his favorite deities regularly. He had vision of Nageshwara Shiva, Pinakeshwara Shiva and Pareshwar Shiva. He used to conduct religious rituals regularly which he practiced during his disciple-hood day's right up to the end that is till the day he merged into "Parabrahma". He personally studied all the Vedas, religious scriptures and complied the proved (Siddha) mantras and prepared rules for daily religious rituals. He would start his day at 3:30 am and finish all his daily rituals by Sunrise. Similarly, every day he would collectively with devotees conduct daily religious rituals, pranayama, japa and dhyana and deliver "Pravachana" every morning and evening.



Swamiji also undertook valuable work related to the field of education. He established Gurukul type schools and schools based on Vedic traditions at Ellora, Dhamane, Aurangabad and Bet Kopargaon. He established Hostels with free stay and food facilities for poor boys at Triambakeshwar, Nasik, Aurangabad and Kopargaon. He started "Goshala" in each of his Ashrams where a large number of Cows and Calves were taken care of.

## Shri Saibaba Mandir, Shirdi

Sai Baba of Shirdi, also known as Shirdi Sai Baba, was an Indian spiritual master who is regarded by his devotees as a saint and a fakir. He is revered by both his Hindu and Muslim devotees during as well as after his lifetime.



According to accounts from his life, he preached the importance of realization of the self and criticized love towards perishable things. His teachings concentrate on a moral code of love, forgiveness, helping others, charity, contentment, inner peace and devotion to the God and guru. He stressed the importance of surrender to the true Satguru, who, having trod the path to divine consciousness, will lead the disciple through the jungle of spiritual training.



Dear students,

It is my pleasure and privilege to greet you all by virtue of being the chairman for the group of institution established under our trust. I vividly recall the simple, trustful, sympathetic and empathetic service minded life style of Shri Janardhan Swami. Influencing life of Swamiji in motivating ours sprit and empowering us with strength to take this virtue of establishing Institutes.

It is my desire that the students of our institute shall be trained not only a good quality service oriented profession and also as a good citizens of our country. Pharmacy, Nursing, Physiotherapy, Homoeopathic, Ayurved & Modern Medicine is medical profession, to serve the people who are in need, console those with grief, help who are weak, heal the wounds, restore joy in times of mentally disturbed and hope in despair. hence though it is a treacherous and difficult profession.

It is a noble and joyful vocation from this day onwards you are going to be a different person. You are notonly going to live for ours, but going to learn the art of living for others more than the knowledge your skill, more than the medicine your words, more than the disease your smiles are going to be the stronger

weapons of healing.

I assure you to the parents that we will take all efforts to groom your children to become a well disciplined, professionally competent. socially relevant, spiritually alive and good quality skilled both in teaching as well as professionally in the future. Please be in touch with the Principal, Faculty and the manag-ement. cooperate with them in this process of moulding your child, share your aspiration and expectation with us, so that we can improve still further. I am sure you will never regret for letting your son or daughter with us.

This is an unique campus where the hospital, college, hostel, general store, canteen, cafeteria, sports ground etc are all in the same campus. Our compus have multi speciality SJS Hospital with all modern facility We will be available 24 hrs for your help, comfort and support. Do consider it as your home away from your house. Be mutually helpful to each other and care your collogues and comfortable and purposeful stay in our campus. Let me wish you all a bright and prosperous future.

**Mr. C. N. Katkade**  
Chairman



It gives me an immense pleasure to present before you **Rashtrasant Janardhan Swami College of Pharmacy (RJSCOP)** is the Pharmacy College in ahmednagar district introducing pinnacle of excellence in pharma education and research. The commitment for total quality management (TQM) and student development in respect of all is prime slogan and motto of our college. RJSCOP is located in an idyllic ambience for academic activity, has excellent infrastructure and an experienced and dedicated team of faculty (both teaching and non-teaching). We here in RJSCOP make it more simple to our students in participating in all the extra co curricular events in order to create a skillful youth for serving the nation.

We focus on activities such as sports, poster presentation, conferences, seminars, quiz - competition in order to develop interest of students towards pharmacy profession. Though in its nascent stages, the Institute is well equipped and complies with all requirements of the Pharmacy Council of India (PCI), Govt of Maharashtra, Directorate of Technical Education, Maharashtra (DTE), Maharashtra State Board of Technical Education (MSBTE), Dr. Babasaheb Ambedkar Technology University, Lonere (DBATU)

The field of Pharmacy is redefining itself to meet twenty-first century healthcare needs, but at RJSCOP our primary focus is the integration of patient care, ethics, and knowledge. We are committed to deliver quality pharmacy education in order to develop students who will be professionally, intellectually adept and socially responsible.

Here at the RJSCOP, we value innovation, learning and the advancement of knowledge. We value research and its application toward improving the use of medications in society. We value pharmaceutical care and professionalism. We value diversity in all of its forms. And we value our students, faculty, staff and friends like you.

So join with us to grow and to take pharmacy profession as a satisfying and rewarding career option.

**Dr. Nitin P. Jain**  
M. Pharm, Ph.D

### About Us...

**RASHTRASANT JANARDHAN SWAMI COLLEGE OF PHARMACY** is the milestone of pharmacy profession in Kopargaon rural area. The college is a center of excellence at all levels in the field of pharmaceutical sciences consigned to create self-disciplined physically fit mentally robust & morally strong professionals with high degree of integrity & diverse knowledge. Our faculty are not only superior in the field of education but also capable to meet challenges of every advancing technology in modern pharmaceuticals & globalization for benefit of society in healthcare profession.

**Vision :** To establish excellent learning center in the field of Pharmaceutical education and research and evolve the world class professional to serve the society.

- Mission :**
- l Setting up state-of-the-art infrastructure.
  - l Tuning the faculty to modern technology and establishing strong linkage with industries and institute.
  - l Strong ethical practices and value.
  - l Developing the institute as a center of excellence.
  - l Promote the research and development activity
  - l Providing potent solution meeting the social needs of health and hygiene.

- Policy :**
- l Enhance the academic and social lives of the students.
  - l Attract students of academic standing and diverse backgrounds to Kopargaon Area.
  - l Recruit faculty and staff having strong academic record and having 100% dedication towards their work.
  - l Promote social and economical impact of education on the region.
  - l Enhance the visibility of the community towards the education locally, regionally and nationally.
  - l Fulfill the social and corporate responsibilities.

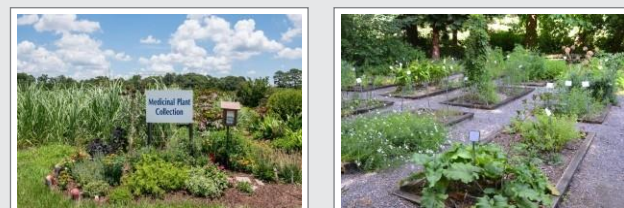
### Infrastructure :

#### 1. Digital Classrooms :

Rashtrasant Janardhan Swami College of Pharmacy has a digital classrooms with all the necessary equipments such as projector, computer LCD & CCTV, White Board, Green Board etc.



**2. Library :** Rashtrasant Janardhan Swami College of Pharmacy has a separate library of 150 square meter area. It contains all subject books which are necessary for students. It contains 2250 books. The library has a membership of **delnet** which gives access to different e-books and journals to our students and faculty. Library have digital e-Library facility with 10 computers.



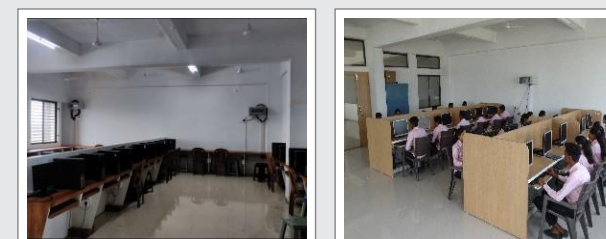
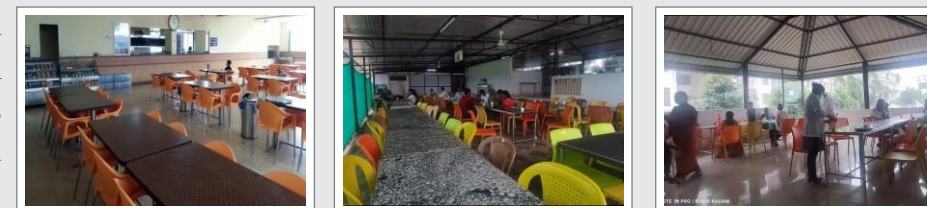
**3. Medicinal Garden :** The college has a Medicinal garden of 2000 square foot area. It is located in front of institute building. Medicinal garden provides information to students of various medicinal plants and their use in pharmacy field.



#### 4. Hostel:

The hostel of our Rashtrasant Janardhan Swami Foundation is situated in campus area only. Foundation has provided good Hostel facility that can accommodate up to 250 girl students and 250 boys students.

**5. Canteen :** Rashtrasant Janardhan Swami Foundation has a separate canteen of 500 square foot area and provides variety of hygienic snacks, breakfast and lunch at affordable rate.



#### 6. Computer Lab :

The Institute has its separate computer lab of 85 square meter area which contains total 50 computers available for our students as well as faculty. All the computers are installed with Windows 7 ultimate latest version 64 bit Operating System. Students are provided with Digital language lab software to improve their communication skill. We also have Biyani Language lab software for our students to develop communication qualities in our students.

#### 7. Sports:

The institute has a separate huge sports ground of 5 acre area. Ground is available in campus area. This is to encouragement the student for participating in sports activity.



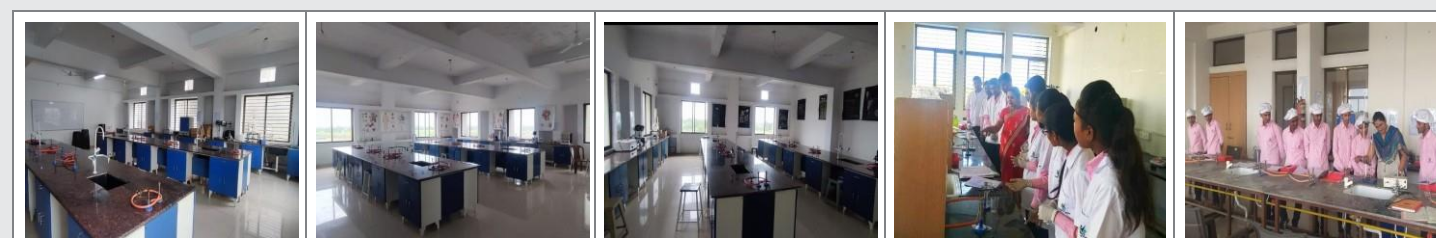
#### 8. Laboratories :

All laboratories well equipped with modern instrument and machine with new modern technology. Institute have four departments Pharmaceutics, Pharmaceutical Chemistry, Pharmacology, Pharmacognosy. As shown below are departments with number of labs.

Sr.No.	Departments	No. of Labs
1.	Pharmaceutics	04
2.	Pharmaceutical chemistry	05
3.	Pharmacology	03
4.	Pharmacognosy	02
5.	Pharmacy Practice	01



All laboratories of respective departments are well designed for conducting the regular practicals of B. Pharmacy and D. Pharmacy All required chemicals as well as instruments and apparatus are available in laboratory.



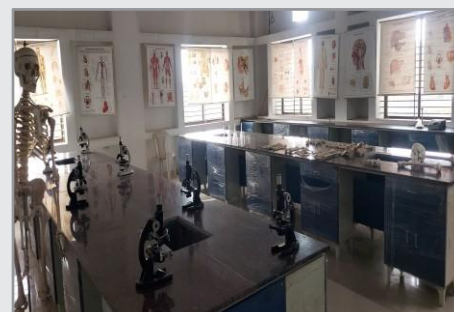
### 8.1 Machine Room :

Machine room are well designed and equipped with modern machinery required for conducting and understating of new experiment. Machine room area is 85 Sq mt. Machine room contains Capsule filling machine, Ampoule washing machine, Ampoule filling machine, Tablet disintegration apparatus, Tablet hardness tester (Dial type and Pfizer type), Friability apparatus, Ointment filling machine, Ampoule machine, Ampoule sealing machine, Tube sealing and All purpose Unit.



### 8.2 Pharmaceutics Laboratory-1

Basic requirements in the compounding and dispensing of pharmaceutical product, formulation of various dosage forms like powders & granules, semisolid preparations, suspension etc. are included in the subject dosage form design at First Year level. Modern Dispensing Practices a subject of First year B.Pharm focuses on handling of prescription, incompatibility studies like physical, chemical therapeutic. Formulation novel drug delivery system like sustained release, delayed release tablets, transdermal patches etc. are included in syllabus of Advance drug delivery systems at final year B.Pharm level.



### 8.3 Pharmaceutics Laboratory - 2

The laboratory is dedicated for conducting practical of Pharmaceutics-I a subject of first year B.Pharm, Physical Pharmaceutics-I/II subjects of second year B.Pharm, and Industrial Pharmacy-I/II subjects of third year B.Pharm. The laboratory is equipped with friability tester, mechanical stirrer, disintegration test apparatus, stainless steel distillation unit etc. Standard operating procedures are displayed for all the equipments in the laboratory.



### 8.4 Pharmaceutics Laboratory - 3

The laboratory is dedicated for conducting for practical of cosmetic science a subject of final year B.Pharm. Cosmetic preparations such as cold cream, vanishing cream, moisturizing cream, eyeliner etc. are prepared and evaluated in the laboratory. The laboratory is also used for conduction practical of Pathology and Clinical Biochemistry a second year B.Pharm subject.



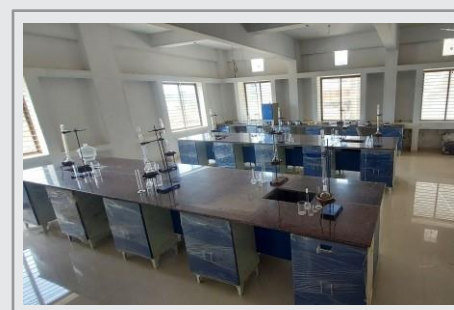
### 8.5 Pharmaceutics Laboratory - 4 (Pharmaceutical Microbiology / Biotechnology)

Pharmaceutical Microbiology is an applied branch of Microbiology. It involves the study of microorganisms associated with the manufacture of pharmaceuticals Some of the most important and widespread uses of microorganisms in the pharmaceutical sciences are the production of antibiotics and vaccines and the use of microorganisms in the recombinant DNA industry. Pharmaceutical microbiology is included in syllabus of second year B.Pharm.



### 8.6 Pharmaceutical Chemistry Laboratory-1 (Organic Chemistry)

Pharmaceutical Chemistry Laboratory is well equipped with all the apparatus and facilities required for performing practical of Pharmaceutical organic chemistry like Organic Qualitative Analysis, Estimation of Functional Groups and Organic Synthesis. Laboratory contains Fume Hood, Heating Mantles, Vacuum pump for filtration, Hot air oven, refrigerator required for practical. The gas cylinders are placed outside the laboratory



### 8.7 Pharmaceutical Chemistry Laboratory-2 (Medicinal Chemistry)

Medicinal Chemistry Laboratory is having Microwave Synthesizer, Refrigerator, UV Chamber, Hot air oven, Muffle Furnace, Digital Melting Point Apparatus, Vacuum pump for filtration, Rotary Evaporator and Kipp's Apparatus for performing practical like synthesis & characterization of medicinal compounds and Microwave Assisted Synthesis.



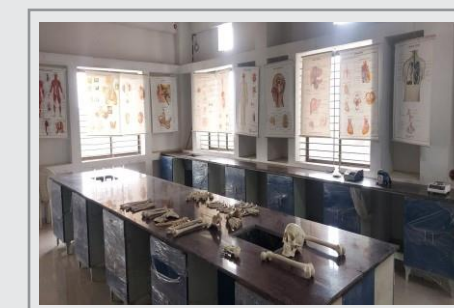
### 8.8 Pharmaceutical Chemistry Laboratory - 3 (Pharmaceutical Analysis)

Pharmaceutical Analysis Laboratory is equipped with analytical instruments like viz. Flame Photometer, Potentiometer, Conductometer, Polarimeter glass double distillation unit, Water deionizer, Deep freezer etc. Standard Operating Procedures (SOP's) of all the equipments have been displayed in the laboratory. The laboratory is also equipped with all the glasswares required for classical and instrumental methods of analysis.



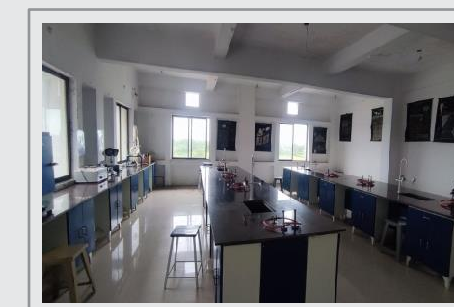
### 8.9 Pharmacology Laboratory - 1 (Human Anatomy and Physiology)

Anatomy is the study of the structures associated with the human body. Physiology is the study of the function of each of these structures. Study of human anatomy and physiology is included in the syllabus of first year B.Pharm. The laboratory is equipped with model human skeleton, spigmomanometer, digital blood pressure measuring apparatus, hemocytometer, spirometer, Sensory organ models, specimen slides, Micorscopes etc.



### 8.10 Pharmacology Laboratory-2 (Pharmacology)

Pharmacology of drugs, their mechanisms of action; therapeutic uses, adverse effects and drug interaction are covered in theoretical classes. The importance of testing drugs for their effects, practical classes aim to illustrate such effects on isolated suitable tissue preparation and whole animal preparations In this laboratory classes, students learn how to handle instruments, animals and learn the pharmacokinetic principles.



### 8.11 Pharmacognosy Laboratory

It is believed that the human body finds plant-derived medicines easier to accept due to the fact that they exist in nature and are not synthetic. This laboratory deals with study of plants or and medicinal agents derived from plant origin, which includes study of physical, chemical, biochemical and biological properties of crude (unprepared) drugs. The laboratory well equipped with the instruments for the study of physical, chemical, macro & microscopical, biochemical (active chemical constituents) and biological (effects of natural compounds on human and animals) characteristics of plant drugs.



### Admission & Eligibility :

#### AVAILABLE COURSE FOR ADMISSION

B. Pharm (Intake - 100) D. Pharm (Intake - 60)

At the present of college provides four year degree course in pharmaceutical sciences Bachelor in Pharmacy (B.Pharm) affiliated to Dr. Babashaeb Ambedkar Technology University, Lonere & Diploma in Pharmacy (D. Pharm) Affiliated to MSBTE Mumbai.

**Eligibility (B. Pharm) :** (Candidate belonging to general category must have scored a minimum aggregate of 45% marks in physics, chemistry and Biology or Mathematics in HSC (10+2))

Those Candidates who belong to Schedule Tribes or Other Bakward Classes(OBC) Must have scored at least 40% marks in physics chemistry and Biology or Mathematics in 10+2.

Candidate must be Indian citizens. MH-CET with non zero score.

Student should be in final merit list for B.Pharm Prepared by admission regularly Authority.

**Eligibility (Direct S.Y. B. Pharm) :** D .Pharm pass With 50% marks.

**Eligibility (D. Pharm) :** Pass in HSC (With physics, chemistry, biology or mathematics.)

### DOCUMENT REQUIRED FOR ADMISSION :

- SSC Marksheet
- HSC Marksheet
- Income certificate
- MH-CET score card (if applicable)
- School Leaving certificate
- Aadhar card
- Domicile and Nationality certificate
- Caste certificate (if applicable)
- Caste Validity certificate (if applicable)
- Non creamy layer for reserve category (if applicable)

### College Rules And Regulation :

It is mandatory for every student to attend all the lecture regularly and he / She should record minimum 80% attendance in theory and the practical as per the University norms. College will have right to take any disciplinary action against the student failing to do so.

Student seeking any type of leave must take prior written permission from the principal.

Students should come to the college in proper dress code. No student shall be allowed to appear for the Examination unless he / she has recorded minimum 80% attendance and fulfilled all the academic and official requirements like completion of journals. Assignments in the prescribed manner and time. Payment of all the dues before the commencement of the examination.

Mobile Phones are strictly prohibited in College campus, if any student does not follow this rule, the college authority has a right to take any type of disciplinary action against him / her.

Candidates found admitted on false or incorrect information shall be debarred from the institute and the fees will be forfeited.

Students are expected to maintain discipline, dignity and the decorum in the classroom, library, laboratories and the campus and observe the rules and regulation prescribed from time to time. Students are also expected to show politeness in outfit and person. Any incidence reported or observed intolerable in conduct within the institute premises or outside the institute will have right to take any necessary disciplinary action against the guilty student.

Ragging of any student in any form and nature or outside the institute premises, shall result in instant rustication of the guilty students from the institute. This action will be as per Maharashtra prohibition if ragging Act 1999.

Smoking, Drug addiction, narcotics consumption of alcoholic drinks, chewing tobacco splitting, writing on the wall and any other ill-habits are strictly prohibited in the premises of the institute .

Damage to the property of the institute like temperin with the fixtures, equipement, instruments, furniture, book, wall paints, computers any other machinery belonging to the institute is strictly prohibited and may result into instant expulsion of the guilty student the principal reserves the right to remove the name of such student from the roll call and / or full recovery of damage.

If any student fails to pay the tution fees, Hostel fees or any dues in time, the principal reserves the right to remove the name of such student from the roll call and / or full recovery of dues to from such student.

Student should read the notices put up on the notice board of the college from time to time. The college will not be liable for any loss and damage of any student due to his failure to read notice in time.

It is mandatory for all students to appear for the class test presentation and complete all given assignment in time.

The parents / guardians have to compulsory attained parent teacher meet every year.

The parents/guardians must Contact the teacher guardians of their ward regularly and especially on the non-receipt of monthly attendance report and academic performance report. All the matters pertaining to discipline directive of the principal shall be mandatory and final.

### Teaching Faculty Degree :



**Mrs. Jain Usha N.**  
Qualification : M.Pharm (Pharm. Chem.)  
Designation : Associate Professor  
Working Experience - 15 Years



**Mr. Jadhav Vijay B.**  
Qualification : M. Pharm (Pharm. Chem.)  
Designation : Associate Professor  
Working Experience : 13 Years



**Mr. Aglawe Sachin B.**  
Qualification : M. Pharm (Pharmaceutics)  
Designation : Associate Professor  
Working Experience : 10 Years



**Mr. Bendre Suraj D.**  
Qualification : M. Pharm (Pharm. Chem.)  
Designation : Associate Professor  
Working Experience : 8 Years



**Mrs. Aghade Karveer B.**  
Qualification : M. Pharm (Pharmacology)  
Designation : Associate Professor  
Working Experience : 7 Years



**Mr. Kawade Dadasaheb M.**  
Qualification : M. Pharm (Pharm. Chem.)  
Designation : Assistant Professor  
Working Experience : 6 Years



**Mrs. Thorat Suvarna S.**  
Qualification : M. Pharm (QAT)  
Designation : Assistant Professor  
Working Experience : 6 Years



**Miss. Borawake Dhanashri D.**  
Qualification : M.Pharm (Pharmaceutics)  
Designation : Assistant Professor  
Working Experience - 3 Years



**Mrs. Lasure Utkarsha S.**  
Qualification : M.Pharm (Pharmaceutics)  
Designation : Assistant Professor  
Working Experience - 2 Years



**Mrs. Chaudhari Kaweri K.**  
Qualification : M.Pharm (Pharmaceutics)  
Designation : Assistant Professor  
Working Experience - 2 Years



**Mrs. Hon Monali P.**  
Qualification : M. Pharm (QAT)  
Designation : Assistant Professor  
Working Experience - 2 Years



**Miss. Gursal Kanchan A.**  
Qualification : M.Pharm (Pharmacognosy)  
Designation : Assistant Professor  
Working Experience - 2 Years



**Miss. Gharmalkar Samrudhi K.**  
Qualification : M.Pharm (QAT)  
Designation : Lecturer  
Working Experience - 1 Years



**Mrs. Somwanshi Prachi S.**  
Qualification : M.Pharm (Pharmaceutics)  
Designation : Assistant Professor  
Working Experience - 1 Years



**Miss. Kote Sonali R.**  
Qualification : M.Pharm (QAT)  
Designation : Assistant Professor  
Working Experience - 1 Years



**Miss. Wakchaure Akshada**  
Qualification : M.Pharm (Pharmacognosy)  
Designation : Assistant Professor  
Working Experience - 1 Years

### Teaching Faculty Diploma:



**Mrs. Fulsundar Swati**  
Qualification : B.Pharm  
Designation : HOD  
Working Experience - 8 Years



**Mr. Chavan Sachin**  
Qualification : M.Pharm (Pharmacognosy)  
Designation : Lecturer  
Working Experience - 4 Years



**Mrs. Deshmush Sonia**  
Qualification : B. Pharm  
Designation : Lecturer  
Working Experience : 4 Years



**Mrs. Kuche Bharati**  
Qualification : B.Pharm  
Designation : Lecturer  
Working Experience - 3 Years



**Miss. Ambilvade Sidhi**  
Qualification : B.Pharm  
Designation : Lecturer  
Working Experience - 1 Years



**Mrs. Ghuge Utpreksha**  
Qualification : B.Pharm  
Designation : Lecturer  
Working Experience - 1 Years

**Our Ist Gpat Qualifier Student :**



**Miss. Ranshur Vishakha S.**

**Our Academic Toppers F.Y.B. Pharm :**



**Miss. Khalkar Khushi B.**  
SGPA - 9.66 Rank - 1



**Mr. Gangurde Vinayak S.**  
SGPA-9.63 Rank - 2



**Miss. Patel Bahaisti Y.**  
SGPA-9.63 Rank - 2



**Miss. Wakte Shrutika R.**  
SGPA - 9.52 Rank - 3

**Our Academic Toppers S.Y.B. Pharm :**



**Miss. Varpe Rutuja**  
SGPA - 9.92 Rank - 1



**Miss. Shaikh Alphiya A.**  
SGPA-9.83 Rank - 2



**Miss. Kale Shweta**  
SGPA-9.83 Rank - 2



**Miss. Kulkarni Prasana K.**  
SGPA-9.75 Rank - 3



**Miss. Badhe Pratiksha S.**  
SGPA-9.75 Rank - 3



**Miss. Pholane Anushka V.**  
SGPA-9.75 Rank - 3

**Our Academic Toppers T.Y.B. Pharm :**



**Miss. Vadane Pratiksha S.**  
SGPA-9.85 Rank - 1



**Miss. Ranshur Vishakha S.**  
SGPA-9.85 Rank - 1



**Miss. Dube Diksha R.**  
SGPA-9.77 Rank - 2



**Miss. Lad Sace P.**  
SGPA - 9.77 Rank - 2



**Miss. Patil Shweta R.**  
SGPA - 9.77 Rank - 2



**Miss. Gudaghe Pratibha S.**  
SGPA-9.77 Rank - 2



**Miss. Udawan Pratiksha A.**  
SGPA-9.74 Rank - 3

**Our Academic Toppers F.Y.D. Pharm :**



**Miss. Gaware Tejashri R.**  
75.20 Rank - 1



**Mr. Gaikwad Sumedh R.**  
73.70 Rank - 2

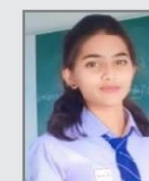


**Miss. Dhage Shraddha S.**  
70.80 Rank - 3

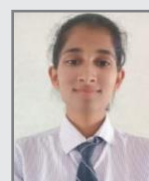
**Our Academic Toppers S.Y.D. Pharm :**



**Miss. Autade Kanchan S.**  
75.70 Rank - 1



**Miss. Chaudhari Rucha J.**  
74.40 Rank - 2



**Miss. Chindhe Kajal A.**  
74.00 Rank - 3

**B Pharm Fees Structure :**

Sr.No	Category	Tuition fee	Development fee	Scholarship	Security deposit	Total fee
1	Open	76923	8077	00	5000	90000
2	EBC	38462 (50%)	8077	38462	5000	90000
3	OBC	38462 (50%)	8077	38462	5000	90000
4	VJNT/NT/SBC	0	8077	76923	5000	90000
5	SC/ST	0	0	85000	5000	90000
6	Minority	51923	8077	25000	5000	90000

**D Pharm Fees Structure :**

Sr.No	Category	Tuition fee	Development fee	Scholarship	Security deposit	Total fee
1	Open	54545	5455	00	5000	65000
2	EBC	27273	5455	27273	5000	65000
3	OBC	27273	5455	27273	5000	65000
4	VJNT/NT/SBC	0	5455	54545	5000	65000
5	SC/ST	0	0	60000	5000	65000
6	Minority	29545	5455	25000	5000	65000

\* Amount of Scholarship show is table in tentative actual amount may be vary.  
\* Institute also provide scholarship to the academic topper 1) 5000/- 2) 3000/- from each class.

**Hostel Fees :**

70,000/- (Pande Mess) & 85000/- (Cosmos Mess) per annum hostel fee pay in two installment, first installment before admission into hostel second installment before starting of second semester. Hostel fee may change any time without notice & its rights of management of Rashtrasant Janardhan Swami Foundation.

**THE SEXUAL HARASHMENT OF WOMEN AT WORKPLACE ( PREVENTION, PROHIBITION AND REDRESSAL) ACT, 2013**

The Sexual Harashment of Women at Workplace (Prevention, Prohibition and Redressal) Act, 2013 is an act to provide protection against sexual harashment and for matters connected therewith or incidental thereto .

Sr.No	Name of Member	Member
1	Mrs. Jain .U.N	Chairmen
2	Mrs. Thorat S.S	Member
3	Miss. Gharmalkar Samrudhi	Member
4	Mrs. Chaudhari K.K	Member
5	Mrs. Hon M.P	Member
6	Dr. Jain N.P (principal)	Member

**Training & Placement Cell :-**

\* Sexual harashment at a workplace is considered violation of womens right to equality, life and liability.  
\* Ensuring an enabling working environment for women through legislation is felt imperative by the Government .  
\* To comply with the directives of Hon"ble Supreme Court of India requiring all employers to devlope and implement mechanism a policy for prevention of sexual harashment at the workplace .  
\* To evolve a permanent mechanism for the prevention and redressal of sexual harashment cases and other acts of gendre based violence at the workplace .

Sr.No	Name of Member	Member	Contact No.
1	Dr. Nitin P. Jain	Principal	9881139970
2	Mrs. Usha N. Jain	Associate Prof.	7588734881
3	Mr. Aghade Karveer	Associate Prof.	7972171372

### Career in pharmacy:

- 1. Research & Development Scientist :** Research scientists are responsible for designing, undertaking and analysing information from controlled laboratory-based investigations, experiments and trials. You could work for government laboratories, environmental organisations, specialist research organisations, universities or R&D of MNC
- 2. Regulatory Affairs :** Regulatory affairs is a profession developed from the desire of governments to protect public health by controlling the safety and efficacy of products in areas including pharmaceuticals
- 3. Production Officer :** Production officers help to create and maintain the process of production in a company. They make sure everything on the production floor is working according to plan and policy.
- 4. Clinical Research :** Clinical research is a branch of healthcare science that determines the safety and effectiveness (efficacy) of medications, devices, diagnostic products and treatment regimens intended for human use. These may be used for prevention, treatment, diagnosis or for relieving symptoms of a disease.
- 5. Quality Control Analyst :** Performs various scientific analysis to evaluate the quality of raw materials, in-process materials and finished goods and ensure compliance with established standards. May be responsible for establishing specifications for conducting assays and writing standard operating procedures.
- 6. Quality Control Supervisor :** Oversees and monitors the inspection and testing of materials, parts, and products to ensure adherence to established quality standards. Establishes testing process inspection protocols, defines sampling procedures, and determines equipment and mechanisms to be used in the process.
- 7. Quality Assurance Officer :** QA officer assure the quality of product manufacture in pharmaceutical industry. He will test all inprocess quality control test.
- 8. Hospital Pharmacist :** Hospital pharmacists are responsible for monitoring the supply of all medicines used in the hospital and are in charge of purchasing, manufacturing, dispensing and quality testing their medication stock along with help from pharmacy assistants and pharmacy technicians.
- 9. Govt Services :** Various govt job like drug inspector, drug analysis, chemist possition available for pharmacist,they role is regulatnga practice of pharmacy as per rules & regulations.
- 10. Academics :** This is one of the oldest profession in all field. various post available for teacher like, Assistent professor, Associate and professor post available in private as well as govt institute.
- 11. Pharmacovigilance :** As world grow the new technology comes in front of us. Pharmacovigilance is one of the new opportunity for pharmacist to work technology for global.
- 12. API Chemist :** Active pharmaceutical ingrident (API) is heart of drug manufacturing. API chemist produce drug in bulk.
- 13. Marketing :** Pharmaceatical, marketing are very different profession from other marketing area here is come rules regulation,& knowledge based marketing. Marketing field is always demanded.
- 13. Retailer or wholesalor drug distributor :** As per D&C Act it is compulsory to dispense, or distribute medicine in supervision of pharmacist only. so this is one exclusive business for pharmacist.

### Action Against Ragging :

- ↳ Maharashtra prohibition of Ragging Act 1999 in effect from 15<sup>th</sup> may 1999 has the following provision for action against ragging.
- ↳ Ragging within or outside of any educational institution is prohibited.
- ↳ Whosoever directly or indirectly commits, participates in, abets, or propogates ragging within or outside any educational institution shall, on conviction, be punished with imprisonment for a term up to 2 years and /or penalty, which may extend to ten thousand rupees.
- ↳ Any student convicted of an offence of ragging shall be dismissed from the educational institution and such student shall not be admitted in any other educational institution for a period of five years from the date of order of such dismissal.
- ↳ Whenever any student or, as the case may be, the parent or guardian or a teacher of an educational institution complains, in writing, of ragging to the head of the educational institution, the head of the educational institution shall, without prejudice to the foregoing provisions, within seven day of the receipt of the complaint, enquire into the matter mentioned in the complaint and if, prima facie, it is found true, suspend the student who is accused of the offence, and shall, immediately forward the complaint to the policestation having jurisdiction over the area in which the educational institution is situated. for further action. Where, on enquiry by the head of the educational, institution, it is found that there is no substance, prima facie, in the complaint received: he/she shall intimate the fact, in writing, to the complaint, the decision of the head of the educational institution shall be final.

